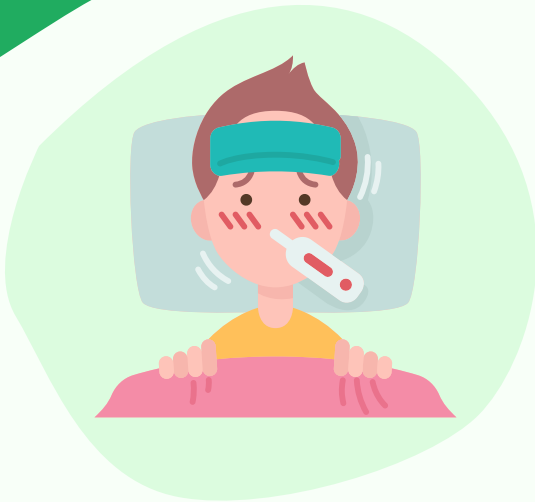


POLIO

WHAT YOU NEED TO KNOW

POLIO IS A CRIPPLING, SOMETIMES DEADLY DISEASE CAUSED BY POLIOVIRUS. PASSED THROUGH THE FECAL-ORAL ROUTE AND CAN CAUSE SEVERE DAMAGE TO THE SPINE WHICH MAY EVENTUALLY LEAD TO PARALYSIS.



SYMPTOMS

- SORE THROAT
- FEVER
- TIREDNESS
- NAUSEA
- HEADACHE
- STOMACH PAIN

SCAN ME



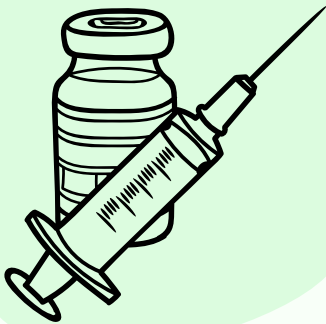
WASH HANDS THOROUGHLY, ESPECIALLY AFTER USING THE TOILET OR CHANGING A DIAPER.



TYPICALLY INFECTS CHILDREN UNDER 5 YEARS OF AGE. THERE IS NO CURE BUT VACCINATION PREVENTS.

ROUTINE CHILDHOOD IMMUNIZATION

- 2, 4, 6-18 MONTHS AND 4-6 YEARS



FOR MORE INFORMATION VISIT: WWW.CDC.GOV/POLIO